

Technical Data

# Fluke VT06 & VT08 Visual IR thermometer

## New Palm-size Imager, Light and Clear



- Wide range of -20 °C - 400 ° C
- 2 hours fast charging time, 8 hours battery life
- Single-level menu interface, Open-and-View
- Quickly locate the target under test with laser pointer (except JP models)
- Auto high/low temperature capture

### Higher resolution, greatly improving temperature measurement efficiency

The 120 x 90 resolution model has more than 10000 infrared pixels, which is 12 times higher than the previous generation\* and rich temperature details help you find problems faster.

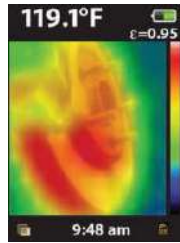


Image from the previous generation product VT04\* (28x28 pixel)

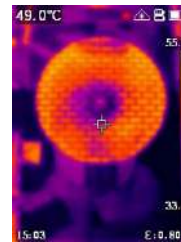


Image from VT08 (120x90 pixel)

### Difficult to distinguish between false and real? Infrared and visible blending can help!

VT08 is equipped with both infrared and visible light cameras and blend a visual image with infrared heat map overlay in real-time to distinguish the object. In addition, you can quickly adjust the blend degree according to your habits, or switch to the Picture-in-Picture mode.



### Experience of thermal imagers in the size of a spot thermometer

Portability is one of the advantages of VT06 / 08 thermal imager. It is almost comparable to the point thermometer in terms of weight and size. Great abilities with a small size, you can get a leap in temperature measurement experience from point to area.



### Drop-proof, dust and water resistance, suitable for harsh industrial environments

Built with legendary Fluke ruggedness, VT06/08 features IP65 ingress protection and 2-meter drop test. It can provide stable and reliable test results even if it is exposed to the sun and rain, or it is dropped.



	VT08	VT06
<b>Thermal image and optics</b>		
Infrared resolution	120×90	
IR frequency band	7.5~14 μm (long wave)	
Frame rate	9Hz	
Thermal sensitivity/NETD	< 60 mk	
Field of view (H x V)	50° x 37.5°	
Spatial resolution	7.6 mrad	
Focus system	Focus free	
Minimum focusing distance	0.5 m (19.7 in)	
<b>Image display and storage</b>		
Image mode	Thermal image Visible image PIP	Thermal image
Palettes	Ironbow, Blue-Red, High-Contrast, Amber, Hot Metal, Grayscale	
Internal storage	> 28GB (>100000 images) *14GB Internal Storage for VT06/VT08 manufactured before 6 Aug 2022	
File format	JPEG compression format (.jpg)	
PIP mode	Yes	No
<b>Temperature measurement</b>		
Temperature range	-20 °C to 400 °C [-4 °F to 752 °F] (not specified for below -10 °C)	
Temperature accuracy	±2°C or 2% @ 23°C±5°C, whichever is greater	
Emissivity	Adjustable	
Background temperature compensation	Yes	
Auto high-/low-temperature capture	Yes	
Center point temperature	Yes	
Alarm	Maximum/minimum temperature alarm in full screen	
<b>Interface and lens</b>		
Visible lens	Yes	No
Flashlight	Yes	No
Laser sighting	Yes (except JP models)	
Type-C interface	Yes	
Tripod interface	Yes	
<b>Power system</b>		
Battery type	Rechargeable Li-ion battery, unremovable	
Battery operation time	≥5 hrs (VT08) ≥8 hrs (VT06) Actual battery life depends on environment and settings	
Charging Time	< 2.5 hrs to full	
Battery charging temperature	0 °C to 50 °C	
Battery charging system	Charge in the machine (the battery is not removable)	
AC adapter	Include power supply, universal adapter Output: 5 VDC, 2 A	
Power saving mode	Yes	

	VT08	VT06
<b>Environmental specifications</b>		
Operating temperature	-10 °C to 50 °C	
Operating altitude	2000 m (1.24 mi)	
Storage altitude	12 000 m (7.5 mi)	
<b>Others</b>		
Warranty	1 year	
Standard accessories	Wrist strap, quick reference guide, charger + adapter, Type-C data cable, data-downloading card	
Display	6.096 cm (2.4-inch) LCD	
Language	Simplified Chinese, Traditional Chinese, Japanese, Korean	
Size	20.4 cm x 6.6 cm x 7.6 cm	
Weight	0.36 kg	0.35 kg
Relative humidity	≤90%, non-condensing	
<b>Safety</b>		
Safety standards	IEC 61010-1: Pollution Degree 2	
Laser	IEC 60825-1: Class 2, 650 nm, <1 mW	
Battery	IEC 62133-2, UN 38.3	
Protection class	IEC 60529: IP65 (with Type-C port closed)	
Drop test	2 m	
<b>Electromagnetic Compatibility (EMC)</b>		
International	IEC 61326-1: Industrial Electromagnetic Environment CISPR 11: Group 1, Class A	
Korea (KCC)	Class A Equipment	
America (FCC)	47 CFR 15 subpart B.	

## Ordering Information

5313580	Fluke-VT06/TW-KOR
5313598	Fluke-VT08/TW-KOR
5318031	Fluke-VT06/JP
5318046	Fluke-VT08/JP

## Standard accessories

Wrist strap for main unit  
Quick reference guide  
Charger + Adapter  
TYPE-C data cable  
Data-downloading card



**Fluke.** *Keeping your world  
up and running.®*

**Fluke Shanghai Corporation**

For information call: 400-810-3435

Web access: [www.fluke.com.cn](http://www.fluke.com.cn)

©2021 Fluke Corporation. 09/2021